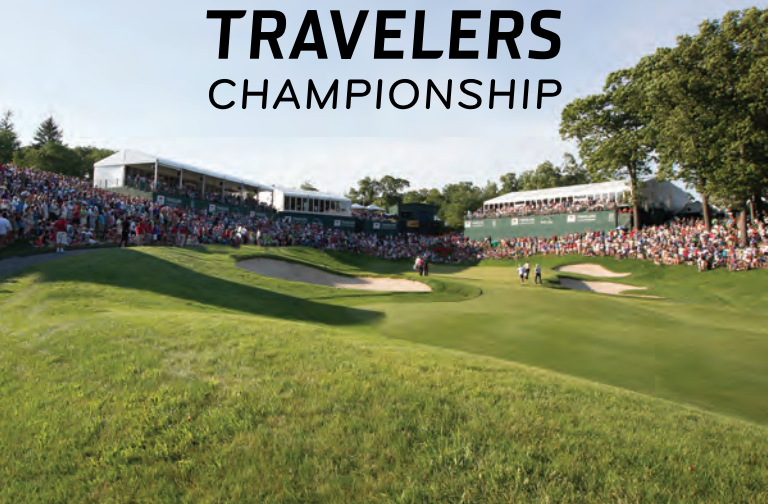




# TRAVELERS CHAMPIONSHIP



# VOLUNTEER HANDBOOK

MONDAY - SUNDAY | JUNE 16-22, 2014  
TPC RIVER HIGHLANDS | CROMWELL, CT

.....



# TABLE OF CONTENTS



- 2. Welcome Letter
- 3. 2014 Executive Committee
- 4. Charitable Impact
- 5. A Year in Review
- 6. Championship and Course History
- 7. Schedule of Events
- 10. Volunteer Uniform
- 11. Volunteer Food and Beverage
- 12. Volunteer Recognition
- 13. Volunteer Appreciation Party
- 14. Volunteer Merchandise Promotion
- 15. Volunteer Information A-Z
- 18. Security Policy
- 21. PGA TOUR Mobile Device Policy
- 22. Course Map
- 24. 18th Hole Hospitality Clients
- 26. Skybox Clients
- 28. Fan Zone Clients
- 30. Hospitality Clients A-Z
- 32. Contact Information

# WELCOME

Welcome Travelers Championship Volunteers!

On behalf of the Travelers Championship, we would like to personally thank you for joining our tournament volunteer team. As Connecticut's PGA TOUR event, we are incredibly fortunate to have a volunteer base 4,000 strong, who support the tournament year after year. Your enthusiasm, hard work and dedication will help to ensure that the 2014 Travelers Championship is a tremendous success. As a testament to the incredible dedication of our tournament volunteers, the Travelers Championship was recently recognized as the PGA TOUR's "Most Fan Friendly Event."

To help showcase our appreciation of your efforts, we have partnered with Hartford HealthCare, who shares in our admiration of our volunteers. For the fifth year, Hartford HealthCare has signed on to be the tournament's volunteer sponsor and has been actively involved in helping us enhance your volunteer experience throughout the week.

We are pleased to highlight an elite player field including defending champion Ken Duke, two-time Master's Champion Bubba Watson, Dustin Johnson, Keegan Bradley, Jason Day, Sergio Garcia, Marc Leishman, Brandt Snedeker, Matt Kuchar, Zach Johnson, Hunter Mahan and many more. In addition to the player field, the tournament will host special events throughout the week, which include Military Appreciation presented by Saint Francis Care, Farmington Bank Family Day, Women's Day presented by Travelers, and the Powerstation Events Concert Series in the SUBWAY® Fan Zone on Friday and Saturday evening featuring Little River Band and Jefferson Starship.

The Travelers Championship is proud to be a PGA TOUR event, which donates 100 percent of net proceeds to charity every year. Since our inception, the tournament has generated more than \$31 million for the region, with \$1.253 million being raised in 2013. Our support for the community would not be possible without the commitment of our volunteers.

We truly appreciate your support and look forward to seeing you on course!



Nathan Grube  
Tournament Director  
Travelers Championship

## 2014 EXECUTIVE COMMITTEE

### ADMINISTRATION

Meagan Mirkovich

### AIRPORT CONCIERGE

Jim Anderson

### AMATEUR CADDIES

Marc Zirolli

### AMBASSADORS

Marlisa Simonson

### CALL CENTER

Ann Esposito

### CHAMPIONS CLUB

Bob Cattel

### CONCESSIONS

Shaun Sheridan, CPA

### CORPORATE HOSPITALITY

Art Kuever

### DELIVERIES

Marlisa Simonson

### DISTRIBUTION

Steve Dahlem

### FAN ZONE

Richard Hernandez

### GALLERY

Maureen O'Connor

### GATES

David S. Charles

### MEDIA

John Mayo

### MILITARY APPRECIATION

Sharon O'Brien

Chris Ward

### PLAYER LOGISTICS

Jay Dykstra

### PLAYER RELATIONS

Drew Gallup

### PLAYER TRANSPORTATION

Dawn Kirkwood

### PRACTICE FACILITY

Jay Salvador

### PRO-AM

Mike Maksymiw, CPA

### PRO-CADDY HOSPITALITY

David W. Timm

Maggie Pastore

### SCORING

Nick Giuliano

### SIGNAGE DISTRIBUTION

Ken Verrastro

### SKYBOXES

Jennifer Shea

### SPONSOR CLUB

Art Kuever

### SPONSOR VALET

Bryan Fix

### STARTERS

John Shulansky

### VOLUNTEER VILLA

Christina Valletta

# CHARITABLE IMPACT



The Travelers Championship is proud to be a PGA TOUR event, which donates 100 percent of net proceeds to charity every year to nonprofit organizations throughout our community. Since 1952, the tournament has generated more than \$31 million for charity and in 2013, the Travelers Championship surpassed \$1.25 million for charity.



Together, anything's possible.



a seriousfun camp



Presented by  
**COHN REZNICK**  
 ACCOUNTING • TAX • ADVISORY



## A YEAR IN REVIEW



Ken Duke had been waiting his entire career for a day like Sunday, June 23. The 2013 Travelers Championship was Duke's 187th start on TOUR, and he was still searching for that elusive first win. He entered the final round two shots back, surrounded on the leaderboard by former Travelers Championship winners, recent major champions and hungry young players. Duke outlasted all of them, thanks to a four-under, 66 final round that gave him a tournament score of 12-under. It still wasn't easy though, as he had to beat Chris Stroud in a second playoff hole to capture his first career victory. Encouraged by a call that morning from his coach, 1953 champion, Bob Toski, who told him, "This is your time," Ken Duke became the sixth first-time winner in the Travelers Championship's last eight years.

# CHAMPIONSHIP HISTORY

In 1952, a PGA TOUR event in Connecticut was born, with the Insurance City Open at Wethersfield Country Club. In 1984, the tournament moved to its current location at TPC River Highlands in Cromwell, CT. The tournament has been around for more than 60 years, with Travelers taking over as the title sponsor in 2007.

Over the years, there have been 53 winners of this event including six multiple-time winners and 22 major champions. The event has crowned champions such as Arnold Palmer, Sam Snead, Billy Casper, and Phil Mickelson.



## TPC RIVER HIGHLANDS

First known as Middletown Golf Club in 1928 and later as Edgewood Country Club, TPC River Highlands' par-70, 6,841-yard course was completely redesigned by the legendary Pete Dye in 1982 and again in 1989 by noted golf course architect Bobby Weed and PGA TOUR Design Services, Inc., with PGA TOUR players Howard Twitty and Roger Maltbie serving as consultants. Featured in the January 2012 edition of Golf Digest, TPC River Highlands was ranked 25th out of 63 courses on the PGA TOUR in a survey done by PGA TOUR professionals. The course meanders over 148 acres and features Bentgrass from tee to green surrounded by bluegrass fescue roughs. Numerous lakes and ponds add to the layout's beauty, with a well-balanced mixture of long and short holes creating an exciting and memorable golf experience.

# SCHEDULE OF EVENTS

## TOURNAMENT WEEKLONG EVENTS

MILITARY APPRECIATION PRESENTED BY SAINT FRANCIS CARE

### Wednesday - Sunday | Patriots' Outpost

The tournament is once again proud to support the U.S. armed forces with Military Appreciation presented by Saint Francis Care. This weeklong salute will give military personnel and their families a chance to see some of the best golfers compete at TPC River Highlands. All active, reserve and retired Military Service Members and United States Veterans are invited into the Patriots' Outpost, a complimentary hospitality venue that offers free food and beverage, Wednesday–Sunday. The venue is fully climate-controlled thanks to the support from our sponsors.

SUBWAY® FAN ZONE

### Wednesday - Sunday

The SUBWAY® Fan Zone will feature interactive activities, the Farmington Bank Kids Zone, concessions, evening concerts and more. The SUBWAY® Fan Zone is the destination for fans at the Travelers Championship. Plan to meet a friend, bring the kids, stop in for lunch, check out the concerts...don't miss it!

### Tuesday-Sunday

Visit the Farmington Bank Kids Zone featuring a rockwall, obstacle course and the Mini Golf Course.

97-9 ESPN PRESENTS THE ROB DIBBLE SHOW WITH PAUL NANOS

### Monday-Sunday | Better Built Basements Radio Deck

The new 97-9 ESPN afternoon live broadcast will be live from the Better Build Basements Radio Deck at the Travelers Championship throughout the week.

## MONDAY, JUNE 16

*Gates Open | 7:00 a.m.*

- Opening Ceremony | 9:00 a.m. | 1<sup>st</sup> Tee
- Opening Ceremony Reception | 10:00 a.m. | Patriots' Outpost
- Clinic with Bob Toski | 10:00 a.m. | Practice Range
- Aetna Tournament Players Pro-Am | 12:30 p.m. Shotgun | Pro-Am Tent
- Pro-Am Celebration (*Invitation Required*) | 5:30 p.m. | Pro-Am Tent



# SCHEDULE OF EVENTS

## TUESDAY, JUNE 17

*Gates Open | 7:00 a.m.*

- PGA TOUR Professionals Practice Round | All Day | 18 Holes
- Drive, Chip and Putt Local Qualifying | 7:00 a.m. - 2:00 p.m. | Practice Facility
- Early Renewal Breakfast | 8:00 a.m. - 9:30 a.m. | GreatBlue Champions Club
- The Umbrella at 15<sup>1/2</sup> - Closest to the pin contest - Players & Caddies  
8:00 a.m. - 5:00 p.m. | The Umbrella at 15<sup>1/2</sup>
- Gameday | 8:00 a.m. - 1:00 p.m. | Michelob ULTRA 19th Hole Sponsor Club & Back 9 Holes of TPC River Highlands
- Farmington Bank Family Day | 9:00 a.m. - 4:00 p.m. | Practice Facility
- Web.com Small Business Summit presented by Connecticut Department of Economic & Community Development | 9:00 a.m. - 1:00 p.m. | Pro-Am Tent
- Operation Shower presented by Connecticare® | 11:00 a.m. - 1:00 p.m. | The First Tee of Connecticut Building David & Geri Epstein Learning Center | *(Invitation Required)*
- Veterans Hiring and Resource Fair presented by Kaman | 2:00 p.m. - 5:00 p.m. | Pro-Am Tent
- The First Tee of Connecticut Clinic with Freddie Jacobson | 2:30 p.m. | Practice Facility
- PGA TOUR Player Experience & Reception for Junior Golfers | 3:30 p.m. - 7:00 p.m. Practice Facility
- Dine Around & Performance *(Invitation Required)* | 5:30 p.m. | The Bushnell

## WEDNESDAY, JUNE 18

*Gates Open | 6:00 a.m.*

- Travelers Celebrity Pro-Am | Pro-Am Tent  
Tee Times: 6:50 a.m. - 8:50 a.m. and 12:00 p.m. - 2:00 p.m.
- Wounded Warrior Threesome presented by Saint Francis Care | Tee Time TBD
- WEEI Presents: Dennis & Callahan Show | 6:00 a.m. - 10:00 a.m. | Radio Deck
- Birdies for the Brave Military Caddie Program | 8:00 a.m. - 2:00 p.m. | 17<sup>th</sup> Hole
- The Umbrella at 15<sup>1/2</sup> - Closest to the pin contest - Amateurs | 8:00 a.m. - 5:00 p.m. The Umbrella at 15<sup>1/2</sup>
- FML, CPAs Celebrity Mini Golf Tournament | 9:30 a.m. & 10:30 a.m. | SUBWAY® Fan Zone
- GreatBlue, PGA TOUR Wives & Make-A-Wish® Mini Golf | 11:30 a.m. - 2:00 p.m. | GreatBlue Champions Club & FML, CPAs Mini Golf Course
- WFAN & FOXSPORTS1&2 Present: The Mike Francesa Show | 1:00 p.m. - 6:00 p.m. | TPC River Highlands Clubhouse Patio

## THURSDAY, JUNE 19

*Gates Open | 6:00 a.m.*

*Broadcast: Golf Channel: 3:00 p.m. - 6:00 p.m.*

- Travelers Championship First Round  
Tee Times: 6:50 a.m. - 8:50 a.m. and 12:00 p.m. - 2:00 p.m. *\*Tee times are subject to change*
- Caddie Appreciation Day | All Day | Caddie Tent
- Women's Day Presented by Travelers | 7:00 a.m. - 2:00 p.m. | Pro-Am Tent  
Breakfast *(Ticket Required)* | 7:00 a.m. - 1:00 p.m.  
Complimentary activities available throughout the day to all women.
- HYPE's Tee It Up for Charity *(Registration Required)* | 5:30 p.m. | Pro-Am Tent

# SCHEDULE OF EVENTS

## FRIDAY, JUNE 20

Gates Open | 6:00 a.m.

Broadcast: Golf Channel: 3:00 p.m. - 6:00 p.m.

- Travelers Championship Second Round  
Tee Times: 6:50 a.m. - 8:50 a.m. and 12:00 p.m. - 2:00 p.m.  
\* Tee times are subject to change
- Connecticut Magazine Top Docs (Invitation Required) | 6:00 p.m. - 8:00 p.m. | Pro-Am Tent
- Volunteer Awards | 6:30 p.m. | SUBWAY® Fan Zone
- Powerstation Events Concert Series featuring Little River Band | Conclusion of Play - 8:30 p.m.  
SUBWAY® Fan Zone

## SATURDAY, JUNE 21

Gates Open | 7:00 a.m.

Broadcast: Golf Channel: 1:00 p.m. - 2:30 p.m.

CBS: 3:00 p.m. - 6:00 p.m.

- Travelers Championship Third Round | Tee Times: 8:00 a.m. - 2:00 p.m.  
\* Tee times are subject to change
- The First Tee of Connecticut Breakfast (Invitation Required) | 9:00 a.m. - 11:00 a.m. |  
The First Tee of Connecticut David & Geri Epstein Learning Center
- Volunteer Appreciation Party | 5:00 p.m. & 7:00 p.m. | Pro-Am Tent
- K9's for Warriors Presented by Liberty Bank | 1:30 p.m. | Patriot's Outpost
- Powerstation Events Concert Series featuring Jefferson Starship | Conclusion of Play - 8:30 p.m.  
SUBWAY® Fan Zone

## SUNDAY, JUNE 22

Gates Open | 7:00 a.m.

Broadcast: Golf Channel: 1:00 p.m. - 2:30 p.m.

CBS: 3:00 p.m. - 6:00 p.m.

- Travelers Championship Final Round | Tee Times: 8:00 a.m. - 2:00 p.m.  
\* Tee times are subject to change
- Lustgarten Foundation Stroll | 6:30 a.m. | Pro-Am Tent
- Closing Ceremony | 6:00 p.m. or Conclusion of Play | 18<sup>th</sup> Green



# VOLUNTEER UNIFORM



The Travelers Championship is a televised, professional sporting event, so it is important for our volunteers to meet the standards of professional golf.

While in uniform, volunteers **must**:

- Wear the official 2014 volunteer golf polo and hat or visor
- Wear khaki colored pants, skirts, capris or shorts of appropriate length
- Wear clean golf shoes or predominately white or black sneakers
- Wear their own black rain gear, if heavy rain occurs
- Treat every guest and volunteer of the tournament with the utmost respect

While in uniform, volunteers **must not**:

- Wear the previous year's golf polo's, hats or visors
- Wear denim or cargo shorts
- Wear flip flops or sandals
- Wear branded baseball caps
- Consume alcohol (except at the Volunteer Appreciation Party)
- Ask for player autographs
- Participate in fan activities
- Smoke
- Use cameras
- Use cell phones for personal use

# VOLUNTEER FOOD AND BEVERAGE PROGRAM

## BREAKFAST

Throughout the week, the Volunteer Villa will provide breakfast each morning for all volunteers, starting at 5:30 a.m. Please make sure you stop by the villa to check in and take a bagel, muffin or donut for the course.

## LUNCH

On Monday, June 16 and Tuesday, June 17, lunch will be served in the Volunteer Villa from 11:30 a.m. – 2:00 p.m.

On Wednesday, June 18 – Sunday, June 22, volunteers must pick up their volunteer meal cards each morning in the Volunteer Villa unless told otherwise by your chair. These food cards will be accepted at designated concession areas on course. Please remember that the meal cards are day specific and cannot be redeemed for alcohol or apparel.

## AFTERNOON SNACK

Throughout the week, the Volunteer Villa will provide snacks for the volunteers to take out on the course. Volunteers should stop by the villa to take a break and grab an afternoon snack.



**TRAVELERS**  
CHAMPIONSHIP

Volunteers Sponsored by  
**Hartford**  
HealthCare



**\$12.50**  
**VOLUNTEER MEAL CARD**

**FRIDAY**  
**JUNE 20, 2014**

# VOLUNTEER RECOGNITION

## THE VOLUNTEER OF THE YEAR AWARD

To recognize the extraordinary efforts of the Travelers Championship volunteers, Hartford HealthCare would like to recognize volunteers who go above and beyond as the 2014 Volunteer of the Year, 2014 Rookie of the Year, 2014 Best Team Player, 2014 Most Hard Working Volunteer and the 2014 Most Charismatic Volunteer.

Throughout the week, the committee chairs will recognize the efforts of individuals and groups who exemplify the spirit of the Travelers Championship. Each volunteer recognized, will be in the running for one of the 2014 Travelers Championship volunteer awards. As the 2014 Volunteer of the Year, Hartford HealthCare will sponsor a \$2,000 donation to the winner's charity of choice. All of the winners will be announced prior to the Powerstation Events Concert Series Event featuring Little River Band on Friday, June 21.



The Travelers Championship would like to thank Hartford HealthCare for sponsoring the 2014 volunteer program. Each year, Hartford HealthCare is actively involved in helping the tournament enhance the volunteer experience throughout tournament week.

Again, this year, Hartford HealthCare will be providing a Volunteer Appreciation Station in the SUBWAY® Fan Zone for volunteers to take a snack or fill up their complimentary Hartford Healthcare water bottle.

### **The Privilege of Partnership - Exclusive Pricing. Exceptionally Simple.**

In recognition of your association with the Travelers Championship, you are eligible for X-Plan pricing when you purchase your next vehicle. On behalf of Ford Motor Company, we are offering you exclusive pricing, exceptionally simple.

To get started:

1. Email [xplan@ford.com](mailto:xplan@ford.com) the following information with the subject line "Travelers Championship X-Plan Offer":
  - Full Name
  - Address
  - Last four digits of social security number
2. Receive your PIN
3. Visit your local dealer

Offer valid until January 5, 2015 on eligible Ford or Lincoln vehicles. This offer is not compatible with any other private offer. Offer is transferable to other household members. Dealerships must retain proof of eligibility in the deal jacket. The New Vehicle Purchase Program customer is entitled to the price in effect at the time the vehicle was invoiced. X-Plan is a pre-determined price based on dealer invoice or A-Plan price depending on brand. The X-Plan price is noted on the dealer invoice. From time to time the Company may offer incentives or rebates. Unless specifically excluded by the Company, incentives or rebates are available to New Vehicle Purchase Program customers in addition to the X-Plan price. See your local Ford dealer for details and qualifications. Any questions, please contact us at [xplan@ford.com](mailto:xplan@ford.com).

# VOLUNTEER APPRECIATION PARTY

Where: Pro-Am Tent

When: Saturday, June 21

Two Seatings: 5:00 p.m. and 7:00 p.m.

*Invitation and Volunteer Badge required for entry*

<p><b>VOLUNTEER PARTY</b></p> <p><small>The Travelers Championship is proud to host a Volunteer Appreciation Party. Come join us for a fun night of food and drinks as we thank our volunteers and celebrate the 2014 Travelers Championship!</small></p>	
<p> <b>TRAVELERS CHAMPIONSHIP</b></p> <p><small>Volunteers Sponsored by</small></p> <p> <b>Hartford HealthCare</b></p>	<p>Saturday, June 21, 2014 5:00 p.m. &amp; 7:00 p.m. Pro-Am Tent</p> <p><small>All volunteers must present this invitation along with their volunteer badge in order to attend the party. There will be two seatings (5:00 p.m. and 7:00 p.m.). Unfortunately, guests are not permitted to attend.</small></p>

On Saturday, June 21, the Travelers Championship will be hosting a Volunteer Appreciation Party in the Pro-Am Tent. There will be two seatings, one at 5:00 p.m. and one at 7:00 p.m. All tournament volunteers are encouraged to come and enjoy some food and drinks as we thank our volunteers and celebrate the 2014 Travelers Championship. Please remember that volunteers will need to present their invitation along with their volunteer badge in order to attend the party. Unfortunately, guests are not permitted to attend.

Additionally, on Friday, June 20, volunteers are encouraged to head down to SUBWAY® Fan Zone for the Powerstation Events Concert Series, as prior to the concert, Hartford HealthCare and the Travelers Championship will announce the 2014 Volunteer of the Year and the other volunteer recognition awards as well as show a short video with photos from the week.

# THANK YOU!

From all of us at the  
Travelers Championship!



## MERCHANDISE PROMOTION FOR ALL VOLUNTEERS!

All volunteers will receive a 20% discount in the tournament merchandise tent during normal business hours (Wednesday - Sunday). To receive the discount, you must present your volunteer badge upon purchasing your items.

# VOLUNTEER INFORMATION A-Z

## ADA VIEWING LOCATIONS

1 <sup>st</sup> Tee	8 <sup>th</sup> Green
9 <sup>th</sup> Green	10 <sup>th</sup> Tee
18 <sup>th</sup> Green	Practice Facility

## ADMISSION GATES

The three admission gates are located at the following:

- Main Entrance: Accessible via main entrance and Lot B parking lot
- 9<sup>th</sup> Fairway: Accessible via foot on Golf Club Road
- 6<sup>th</sup> Green: Accessible on foot via Field Road

## AMBASSADOR LOCATIONS

Headquarters - 9/10 Crossover	Main Entrance
Clubhouse Crossover	18 Concessions
Fan Zone Entrance – 1 <sup>st</sup> Tee	Fan Zone Entrance - 17 <sup>th</sup> Tee
Fan Zone - Center	9 <sup>th</sup> Hole Gate

## ATM's

Main Entrance	Merchandise Tent
Behind the 1st Tee	18 Concessions
SUBWAY <sup>®</sup> Fan Zone	Michelob ULTRA 19th Hole Sponsor Club

## BADGES

### VOLUNTEER BADGE - PURPLE

This purple badge is given to each volunteer and allows “grounds only access” to the event all week. Volunteers must keep this badge visible at all times and may use this badge as a ticket to the event on days that they are not volunteering. Please do not wear your volunteer uniform on days that you are not volunteering.

### HOLE MARSHAL & SCORING BADGE - RED

This red badge is given to all hole marshal and scoring volunteers and allows “grounds only access” to the event all week. The hole marshal and scoring badge allows for these volunteers to go “inside the ropes” along the 18 holes. All volunteers must keep this badge visible at all times and may use this badge as a ticket to the event on days that they are not volunteering. Please do not wear your volunteer uniform on days that you are not volunteering.

### GROUNDS BADGE - DARK GRAY

Each volunteer is given a grounds badge to distribute and use as a ticket to the event all week. The grounds badge gives the guest “grounds access only.”



# VOLUNTEER INFORMATION A-Z

## CONCESSION STANDS

Practice Facility\* | 7:00 a.m. - 7:00 p.m. | Wednesday - Sunday (Breakfast Available)  
Hole No.5 | 10:00 a.m. - 7:00 p.m. | Wednesday - Sunday  
Hole No.8 | 10:00 a.m. - 7:00 p.m. | Wednesday - Sunday  
Hole No.15 | 10:00 a.m. - 7:00 p.m. | Thursday - Sunday  
Hole No.18 | 7:00 a.m. - 7:00 p.m. | Wednesday - Sunday (Breakfast Available)  
Fan Zone | 10:00 a.m. - 7:00 p.m. | Wednesday - Sunday (Extended Hours on Fri. & Sat.)  
Hole No.12 | 10:00 a.m. - 7:00 p.m. | Thursday - Sunday  
Upper 15 Beverage Stand | 10:00 a.m. - 7:00 p.m. | Wednesday - Sunday

## EMERGENCIES

If an emergency occurs, please dial 911 and notify the committee chair, a hole captain or staff member closest to you. They will radio the nearest Saint Francis Care medical personnel.

## FIRST AID

The Saint Francis Care medical headquarters is located directly across from the clubhouse. You can also find first aid tents at the 5<sup>th</sup> Hole, 12<sup>th</sup> Hole and 17<sup>th</sup> Hole.

## GOLF CARTS

Any volunteer using a cart should use caution as to not interfere with play in any manner. Always operate with caution! Watching play while on a golf cart is strictly prohibited. Please follow all cart enforcements and policies throughout tournament week. All volunteers operating a golf cart must be at least 18 years old.

## HANDICAP PARKING AND ADA SHUTTLE

Handicap accessible parking is available for vehicles with a valid state permit. A complimentary ADA shuttle will be available from the lot to behind the 18th green and will be running 8:00 a.m. – 6:00 p.m., Monday – Sunday. Please note there may be extended hours on the concert nights. For more information, please visit our website [www.TravelersChampionship.com](http://www.TravelersChampionship.com).

## HOSPITALITY VENUES: Hours of Operations

Greenside Club	8:30 a.m. - 30 minutes post play
GreatBlue Champions Club	10:00 a.m. - 30 minutes post play
Michelob ULTRA 19th Hole Sponsor Club	10:00 a.m. - 30 minutes post play
Corporate Row Chalets	10:00 a.m. - 30 minutes post play
Skyboxes/ Sky Suites	10:00 a.m. - 30 minutes post play
Patriots' Outpost	10:00 a.m. - 30 minutes post play

presented by Saint Francis Care

*Please note, all hospitality venues are open Wednesday - Sunday.*

# VOLUNTEER INFORMATION A-Z

## HOSPITALITY VENUES: Locations

Greenside Club	18 <sup>th</sup> Green, Player Right
GreatBlue Champions Club	18 <sup>th</sup> Green, Player Left
Michelob ULTRA 19th Hole Sponsor Club	18 <sup>th</sup> Fairway, Player Right
Corporate Row Chalets	18 <sup>th</sup> Fairway, Player Right
Skyboxes	15 <sup>th</sup> Green/18 <sup>th</sup> Tee, 17 <sup>th</sup> Green, 17 <sup>th</sup> Tee
Patriots' Outpost presented by Saint Francis Care	Adjacent to 1 <sup>st</sup> Tee
TPC Member Area*	Clubhouse Patio
Travelers Trophy Suite	18 <sup>th</sup> Green, Player Left
Travelers Corporate Row	18 <sup>th</sup> Fairway, Player Right
Travelers 360	17 <sup>th</sup> Green/15 <sup>th</sup> Tee

\* Please note, the TPC Member Area is only open Thursday - Sunday

## LOST AND FOUND

Lost and found is located at the Tournament Office.

## MERCHANDISE TENT

The official Travelers Championship and PGA TOUR Merchandise Tent is located off of the 9<sup>th</sup> green.

## MILITARY APPRECIATION

During the week, the Travelers Championship will be honoring all active, reserve and retired Military Service members and their dependents with complimentary admission. These individuals, along with veterans and their spouses, will have access to the Patriots' Outpost presented by Saint Francis Care, a climate-controlled hospitality venue meant to honor the men and women who serve our country. This venue is adjacent to the 1<sup>st</sup> tee box.

## PERSONAL BELONGINGS

Unfortunately, there are no locations for volunteers to store their personal belongings. We recommend that anything of value be left at home. Volunteers are allowed to bring in a bag that complies with our updated security policy. Please see page 19 for the full policy.

## PUBLIC BLEACHERS presented by Nestlé Purina PetCare Company

Practice Facility	Overlooking practice facility
Hole No. 1	1 <sup>st</sup> Tee, Player Right
Hole No. 8	Directly Behind 8 <sup>th</sup> Green
Hole No. 9	9 <sup>th</sup> Green, Player Left
Hole No. 10	Directly Behind 10 <sup>th</sup> Tee
FML, CPA Mini Golf Course	

# VOLUNTEER INFORMATION A-Z

## PUBLIC PARKING

Parking is based on a first come, first served basis. All spectators will be directed to park in Lot B. If Lot B is full, officers will direct spectators to the off-site lot adjacent to Route 99. There is a \$10.00 parking fee per day.

## RESTROOMS

Main Entrance	5 <sup>th</sup> Fairway, Player Left
Behind 8 <sup>th</sup> Tee	12 <sup>th</sup> Fairway, Player Right
Behind 18 Concessions	SUBWAY <sup>®</sup> Fan Zone
Patriots' Outpost	15 <sup>th</sup> Tee

*\*All restrooms locations include ADA accessible facilities.*

## VOLUNTEER PARKING

All volunteers are given a pass to park in the Lot B parking lot. Unless otherwise noted by your chair, volunteers will then proceed to the Volunteer Villa, where they will check in for their scheduled shift. Please remember that it will take approximately 25 minutes from the time you park until the time you arrive at your scheduled post. Volunteers who arrive without their tournament issued parking pass will be charged the \$10.00 parking fee.

## VOLUNTEER VILLA

Due to heightened security, all volunteers are required to pass through a security check before proceeding to their committee location. Volunteers must check in at the Villa and then enter the course through the main gate.

## WILL CALL

The Will Call trailer is located 1/10 of a mile south of the entrance to the general parking lot. All guests will be required to show a photo id in order to pick up their package. The Will Call hours are as followed:

Monday, June 16	7:00 a.m. - 6:00 p.m.
Tuesday, June 17	7:00 a.m. - 6:00 p.m.
Wednesday, June 18	5:00 a.m. - 6:00 p.m.
Thursday, June 19	6:00 a.m. - 6:00 p.m.
Friday, June 20	6:00 a.m. - 6:00 p.m.
Saturday, June 21	7:00 a.m. - 6:00 p.m.
Sunday, June 22	7:00 a.m. - 2:00 p.m.

## WEATHER EVENT

If inclement weather should occur, play may be suspended or cancelled. For the most up to date tournament information regarding schedule of events and time of play, please visit one of the following locations:

- [www.TravelersChampionship.com](http://www.TravelersChampionship.com)
- [www.facebook.com/TravelersChampionship](https://www.facebook.com/TravelersChampionship)
- [www.twitter.com/TravelersChamp](https://www.twitter.com/TravelersChamp)

# SECURITY POLICY

## SECURITY

Since the safety and well-being of everyone is of the utmost importance, please adhere to standard tournament policies. Listed below is the outline of the policies and procedures that will be enforced at the Travelers Championship.

### Bag Inspection

All items are subject to search. Item inspection will be performed at all Admission Gates.

The following bags are **PERMITTED** on tournament grounds:

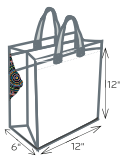
### Permitted Bags



Opaque Bags  
Not to Exceed 6" x 6" x 6"



1-Gallon Clear,  
Resealable Plastic Bag



Clear Tote Bags, Plastic,  
Vinyl or Other Carry Items



Medically Necessary and  
Infant Diaper Bags

## PROHIBITED ITEMS

The following items are **PROHIBITED** at the Travelers Championship and must be returned to your vehicle:



Clear Tote Bags, Plastic,  
Vinyl or Other Carry Items  
Larger than 12" x 6" x 12"  
(in their natural state)



Camera Bags



Backpacks



Chair Bags



Opaque Bags  
Larger than 6" x 6" x 6"  
(in their natural state)



Cameras (Thurs - Sun)



Video Cameras



Posters, Signs or Banners



Binocular Case



Tinted Plastic Bag



Lawn or Oversized Chairs



Weapons of Any Kind



Plastic, Metal or Glass  
Cups, Cans or Containers



Clear Backpack



Printed Pattern Plastic Bag



Bicycles



Seat Cushions



Computers or Laptops



Mesh Synch Bag



Coolers of Any Kind



Radios, TVs, or Other  
Electronic Noise  
Producing Items



Fireworks, Laser Pointers  
or Other Explosives



Whistles, Horns or  
Noise Makers



Pets (with the exception  
of Service Animals)



Outside Food or  
Beverage (except for  
Medical or Infant Needs)

# SECURITY POLICY

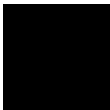
## PERMITTED ITEMS

The following items **WILL BE** allowed at the Travelers Championship:



## METAL DETECTION

Everyone attending the tournament is subject to search at the entrances and on the course at any time.



An exception will be made for fans needing to bring medical supplies into the tournament. These medically necessary items will be permitted after proper inspection at one of the admission gates.

# PGA TOUR MOBILE DEVICE POLICY

The PGA TOUR permits spectators and volunteers to bring personal mobile devices to the Travelers Championship. In order for the Travelers Championship to retain this program, there are various policies that must be developed and implemented regarding the use of mobile devices.

## WHAT IS A MOBILE DEVICE?

A mobile device is any device that is able to send or receive calls or data such as emails or text messages. Examples: Cell Phone, iPhone, iPad, Blackberry, Pager

## WHAT IS THE CELL PHONE POLICY?



- Cell phones must be on silent and calls can only occur in designated “cell phone zones”.
- Texting and emailing are allowed outside of the cell phone zones unless it is near play.
- Cell phones are allowed to be used in the Fan Zone and Concession locations as well as inside enclosed tents, such as Corporate Row, but not on the outside platforms or in the Skyboxes.
- Violators will be warned and devices will be confiscated if the situation warrants.



## IMPORTANT ITEMS TO REMEMBER:

- Cameras are only allowed Monday – Wednesday and are not mobile devices.
- No audio or video is allowed at any time.
- Cell phones can be confiscated by a mobile device committee volunteer or a hole captain.
- A security personnel should be present in an event of a confiscation.
- If a confiscation occurs, the spectator will be given a receipt and the device will be held at the main gate (Lot B parking area) until 6:00 PM. After 6:00 PM, it will be held in the Tournament Office. Any questions, please contact the Tournament Office at 860-502-6800.
- Please speak with your committee chairman about the rules and regulations pertaining to your specific area. Communication of this policy is key and all volunteers must follow these rules.



# TRAVELERS CHAMPIONSHIP

June 16-22, 2014

## Par & Yardage

Hole	Par	Yardage*
1	4	434
2	4	341
3	4	431
4	4	481
5	3	223
6	5	574
7	4	443
8	3	202
9	4	406
10	4	462
11	3	198
12	4	411
13	5	523
14	4	421
15	4	296
16	3	171
17	4	420
18	4	444
Total	70	6,841

\* From tournament tee



Lot B

Main Entrance

Map Sponsored By:



Connecticut Light & Power



Northeast Utilities Companies

National Ambassador Locations	SUBWAY Fan Zone	Restrooms*
ATMs	First Aid	Scoreboard
PURINA Bleachers	Greenside Club	Skyboxes
Cell Phone Zones	FARMINGTON BANK Kids Zone	Sky Suite
Mini Golf Course	Leaderboard	Social Media Wall
greatblue Champions Club	Best Seats in the House	Sponsor Club
Clubhouse	Media Center	Travelers 360
Concessions	Merchandise Tent	Travelers Trophy Suite
Corporate Row	PURINA Pairings Guide Boxes	Video Board
Drink Stands	SAINT FRANCIS CARE Patriots' Outpost	Hartford HealthCare Volunteer Headquarters
	Pro-Am Tent	

\* Each location includes a handicap accessible restroom



# TRAVELERS CHAMPIONSHIP





# 18<sup>TH</sup> HOLE HOSPITALITY CLIENTS

## CLIENT/VENUE NAME

Greenside Club

1. The Hole in the Wall Gang Camp

2. Robinson & Cole, LLP

3. MetroHartford Alliance/PwC

4. Travelers

5. Saint Francis *Care*

6. Webster Bank

7. State of Connecticut Department of  
Economic and Community Development

## LOCATION

Corporate Row

Corporate Row

Corporate Row

Corporate Row

Corporate Row

Corporate Row

Corporate Row

Corporate Row

## SPONSOR CLUB ENTRANCE

8. Michelob ULTRA 19th Hole Sponsor Club

18th Fairway

## TRAVELERS FACILITIES

Travelers Trophy Suite Hospitality

18th Green

Travelers Corporate Row

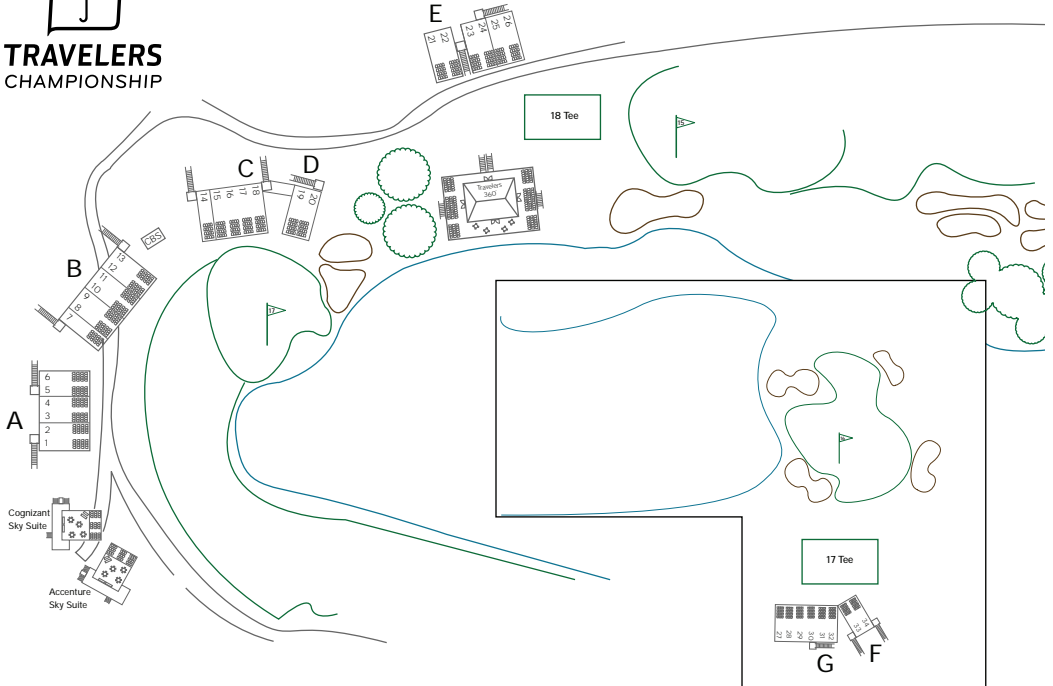
18th Fairway

Travelers 360

15th Green/18th Tee



# TRAVELERS CHAMPIONSHIP



A

B

C

D

E

G

F

18 Tee

17 Tee

21  
22  
23  
24  
25  
26

14  
15  
16  
17  
18

19  
20

Travelers  
360

6  
5  
4  
3  
2  
1

Cognizant  
Sky Suite

Accenture  
Sky Suite

33  
34  
35  
36  
37  
38

27  
28  
29  
30  
31  
32

# SKYBOX CLIENTS

## 17 GREEN SKYBOX CLIENTS

1. IBM
2. ConnectiCare®
3. Clear Channel  
Media and Entertainment
4. L&T Infotech Limited
5. Connecticut Light & Power  
and Yankee Gas
6. BERINGER
7. Mohegan Sun
8. HP
9. IGX Global
10. Halloran & Sage LLP
11. Kelsor Corporation
12. Aetna
13. Aetna
14. United Technologies Corporation
15. United Technologies Corporation
16. EMC Corporation / Razor Technology
17. MasterCard Best Seats in the House™
18. Bank of America
19. Channel 3 Eyewitness News
20. USA Hauling and Recycling Inc.

## 15 GREEN/18 TEE SKYBOX CLIENTS

21. Nestlé Purina PetCare Company
22. Nestlé Purina PetCare Company
23. Daily  
Wed: WTIC AM 1080  
Thu: Aflac  
Fri: UIL Holdings Companies  
- UI, SCG and CNG  
Sat: CBS Outdoor  
Sun: UIL Holdings Companies  
- UI, SCG and CNG
24. Daily  
Wed: Sheraton Hartford South Hotel  
Thu: Anthem Blue Cross and Blue Shield  
Fri: UIL Holdings Companies  
- UI, SCG and CNG  
Sat: Connecticut Daily Newspapers Association  
Sun: UIL Holdings Companies - UI, SCG and CNG
25. Daily  
Thu: United Bank  
Fri: Virtus Investment Partners  
Sat: Minutman Press of Hartford  
Sun: Minutman Press of Hartford
26. Daily  
Wed: Mahoney Sabol & Company, LLP  
Thu: Marcum LLP  
Fri: McCarter & English LLP  
Sat: NetSource Inc.  
Sun: Creative Dimensions

## 17 TEE SKYBOX CLIENTS

27. Daily  
Thu: First Niagara Bank  
Fri: Marshall + Swift / Boeckh  
Sat: DATCO, Inc  
Sun: LAZ Parking
28. Daily  
Wed: Transamerica Retirement Solutions  
Thu: Connecticut Innovations  
Fri: Teradata  
Sat: Hospital for Special Care /  
RBC Wealth Management  
Sun: Aluminum Finishing Co Inc
29. Daily  
Thu: GE  
Fri: GE  
Sun: DATCO, Inc
30. Daily  
Thu: WTNH News 8  
Fri: WTNH News 8  
Sat: NBC Connecticut  
Sun: WTNH News 8
31. Daily  
Thu: Imperva/ FireEye/ Integration Partners  
Fri: Wells Fargo Bank  
Sat: Travelers Championship /  
CT Convention Center  
Sun: Windstream
32. KAMCO Supply
33. ebm-papst Inc.
34. ebm-papst Inc.

## SKY SUITE CLIENTS - 17 GREEN

Accenture  
Cognizant



# FAN ZONE CLIENTS

## FAN ZONE CLIENTS

1. Patriot's Outpost
2. Golf Channel
3. Farmington Bank Kids Zone
4. FML, CPAs Mini Golf Course
5. LEGO Systems, Inc.
6. The Hole In the Wall Gang Camp
7. MasterCard Conceirge
8. Birdies for Charity
9. Golf Digest WiFi Zone
10. Volunteer Appreciation Station
11. Mohegan Sun
12. Ford
13. Saint Franis *Care*
14. XFINITY ZONE
15. Club Med
16. Next Step Living
17. Easy Seats
18. Better Built Basements and Clear Channel Media and Entertainment
19. Kinsley Group
20. Travelers
21. Beringer Spirits Garden
22. TaylorMade Performance Experience presented by Charles Schwab
23. Powerstation Events Concert Stage
24. Fan Zone Grille
25. SUBWAY®
26. Ben & Jerry's
27. The New York Times
28. The Greater Hartford Jaycees
29. Stanley Black & Decker
30. Bluegreen
31. THEGOLFPA - IRELAND
32. The Connecticut National Guard
33. Oak Hill
34. Sears Home Services
35. WTNH News 8 Mobile Weather Lab
36. Ford

# HOSPITALITY A-Z

CLIENT/VENUE NAME	LOCATION
Accenture	Skysuite
Aetna	17th Green
Aflac	15th Green/18th Tee
Aluminum Finishing Co Inc	17th Tee
Anthem Blue Cross and Blue Shield	15th Green/18th Tee
Bank of America	17th Green
Beringer	17th Green
CBS Outdoor	15th Green/18th Tee
Channel 3 Eyewitness News	17th Green
Clear Channel Media and Entertainment	17th Green
Cognizant	Skysuite
Connecticut Light & Power and Yankee Gas	17th Green
ConnectiCare®	17th Green
Connecticut Daily Newspapers Association	15th Green/18th Tee
Connecticut Innovations	17th Tee
Creative Dimensions	15th Green/18th Tee
DATTCO, Inc	17th Tee
ebm-papst Inc.	17th Tee
EMC Corporation / Razor Technology	17th Green
First Niagara Bank	17th Tee
GE	17th Tee
GreatBlue Champions Club	18th Green
Greenside Club	Corporate Row
Halloran & Sage LLP	17th Green
Hospital for Special Care / RBC Wealth Management	17th Tee
HP	17th Green
IBM	17th Green
IGX Global	17th Green
Imperva/ FireEye/ Integration Partners	17th Tee
KAMCO Supply	17th Tee
Kelser Corporation	17th Green
L&T Infotech Limited	17th Green
LAZ Parking	17th Tee
Mahoney Sabol & Company, LLP	15th Green/18th Tee
Marcum LLP	15th Green/18th Tee
Marshall + Swift / Boeckh	17th Tee
MasterCard Best Seats in the House™	17th Green

# HOSPITALITY A-Z

CLIENT/VENUE NAME	LOCATION
McCarter & English LLP	15th Green/18th Tee
MetroHartford Alliance/PwC	Corporate Row
Michelob ULTRA 19th Hole Sponsor Club	18th Fairway
Minutman Press of Hartford	15th Green/18th Tee
Mohegan Sun	17th Green
NBC Connecticut	17th Tee
Nestlé Purina PetCare Company	15th Green/18th Tee
NetSource Inc.	15th Green/18th Tee
Robinson & Cole, LLP	Corporate Row
Saint Francis <i>Care</i>	Corporate Row
Sheraton Hartford South Hotel	15th Green/18th Tee
State of Connecticut Department of Economic and Community Development	Corporate Row
Teradata	17th Tee
The Hole in the Wall Gang Camp	Corporate Row
Transamerica Retirement Solutions	17th Tee
Travelers	Corporate Row
Travelers 360	15th Green/18th Tee
Travelers Trophy Suite Hospitality	18th Green
UIL Holdings Companies - UI, SCG and CNG	15th Green/18th Tee
United Bank	15th Green/18th Tee
United Technologies Corporation	17th Green
USA Hauling and Recycling Inc.	17th Green
Virtus Investment Partners	15th Green/18th Tee
Webster Bank	Corporate Row
Wells Fargo Bank	17th Tee
Windstream	17th Tee
WTIC AM 1080	15th Green/18th Tee
WTNH News 8	17th Tee